



# **ROSBACK\***

---

## **Perforators & Slitters**

---

### **Perf Shaft Sizes**

**ID 1.250mm Page 1**

## **BOWE\***

### **Slitter Shaft Sizes**

**ID 788mm Page 1**

**UPDATE LTD**

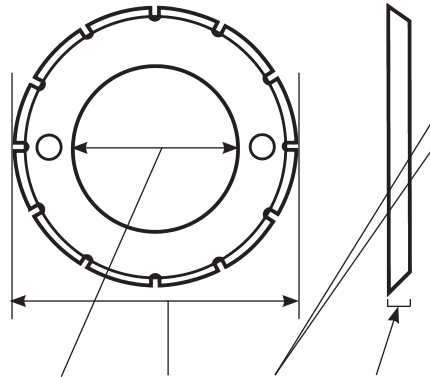
**134 Peavey Circle, Chaska, MN 55318**

**1-800-229-0009**

**P. 952-556-5666**

**F. 952-556-8777**

## Quick tips on choosing correct blades:



# Teeth = Total number of teeth on perf  
 # TPI = Number of teeth per inch  
 (These are generally referred as micro perfs.)

**NOTE!** Lots of problems are caused by dull perfs, slitters and die blocks.

ID	OD	#Teeth	Thick
26mm	39mm	12	0.5mm
Stahl#	200-750-06-00		
Update#	SP200		

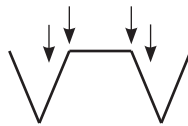
**This guide is organized first by shaft size, smallest to largest...  
 Then by number of teeth, fewest to most (except micro perfs).**

**All images in this guide are actual size for comparison.**

### “V” shaped tooth



- Maximizes the distance between each tooth in perfs with a low number of teeth such as 6, 8, 12 or 18.
- Increases the strength of the teeth in perfs with a high number of teeth such as 60, 72, 80 or more.
- Lower # of teeth (12-18) better for backbone on perfect bound books - sigs won't tear.



#### Also

If shaft is adjustable, a slightly wider perf cut can be made.

### Crimping perf

- Holds sheets together temporarily.
- Used for processing zig zag folded sheets on a gather - stitcher and envelopes on a perfect binder.

### Knockout (punch) perf

- Use when printed product needs perforation in the spine for adhesive binding or air relief.

### Reverse Tooth

Standard



Reverse



- Assumes blades are placed on upper slitter shaft.
- Holds fold together on 16 page books.

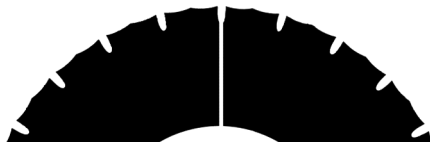
### Round Tooth

- Good for perfering multiple sheets at a time.

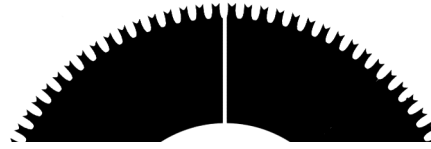


# ROSBACK\*

## PERFORATORS



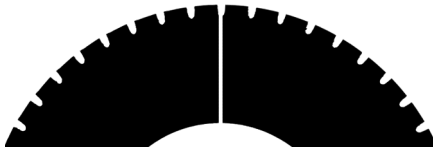
ID	OD	#Teeth	Thick
1.250mm	63.5mm	24	.5mm
Des.	Perf (dbl scallop)		
Update#	221-28-3		



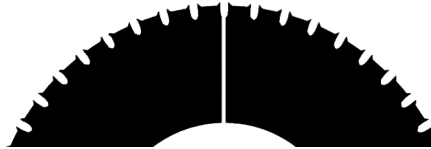
ID	OD	#Teeth	Thick
1.250mm	63.5mm	26	.5mm
Des.	Perf (scallop)		
Update#	221-28-12		



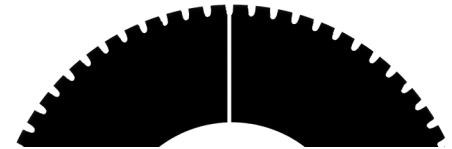
ID	OD	#Teeth	Thick
1.250mm	63.5mm	30	.5mm
Des.	Perf (dbl scallop)		
Update#	221-28-4		



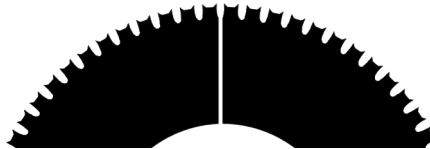
ID	OD	#Teeth	Thick
1.250mm	63.5mm	48	.5mm
Des.	Perf		
Update#	221-277-6		



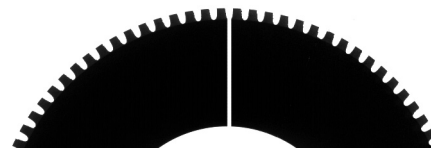
ID	OD	#Teeth	Thick
1.250mm	63.5mm	48	.5mm
Des.	Perf (scallop)		
Update#	221-28-6		



ID	OD	#Teeth	Thick
1.250mm	63.5mm	66	.5mm
Des.	Perf		
Update#	221-277-9		



ID	OD	#Teeth	Thick
1.250mm	63.5mm	66	.5mm
Des.	Perf (scallop)		
Update#	221-28-9		



ID	OD	#Teeth	Thick
1.250mm	63.5mm	92	0.5mm
Des.	Perf		
Update#	221-277-12		

# BOWE TRIMMER\*

## SLITTERS

Not Pictured

Not Pictured

ID	OD	#Teeth	Thick
.788mm	1.834mm	-	.200mm
Des.	Top slitter, single edge, 3 hole		
Update#	BW7334		

ID	OD	#Teeth	Thick
.788mm	1.834mm	26	.200mm
Des.	Bottom slitter, sq. edge, 3 hole		
Update#	BW7354		

\*Rosback is a registered trademark of Rosback